

**Name:** \_\_\_\_\_



# Self-Guided Museum Trail

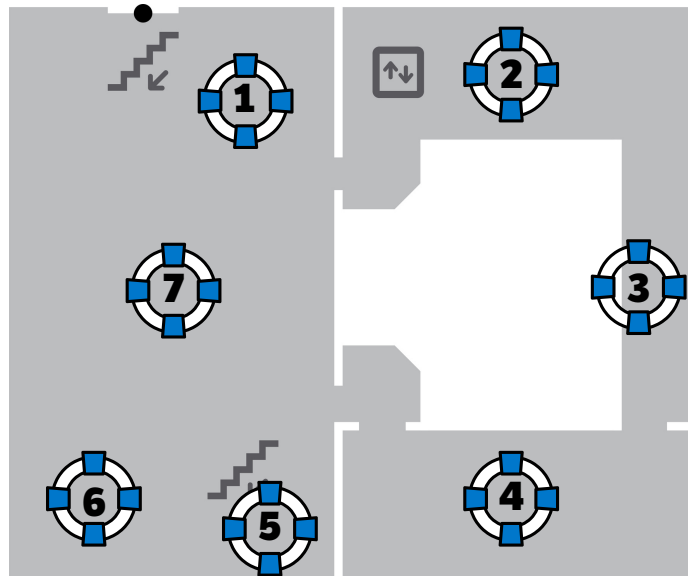
## Senior Years

This trail booklet is designed for teachers to use with students during a self-guided visit to the South Australian Maritime Museum. It introduces the main exhibitions and explores the themes, concepts and ideas addressed. The activities in this booklet encourage students to interact with the museum objects by thinking, talking and engaging in hands-on activities.

**STUDENTS MUST BE SUPERVISED AT ALL TIMES WHILE IN THE MUSEUM**

## Upper Floor

1. Wrecked
2. Tapestry of Treasures
3. Figureheads
4. Windjammers
5. HMS Investigator Anchor
6. First Voyages
7. Life's a Beach



# 1

## Wrecked

This exhibition tells the stories of some of the 850 shipwrecks off the South Australian coast.

Take a look through this exhibition and answer the following questions:

Who do you think shipwrecks belong to? \_\_\_\_\_

\_\_\_\_\_

\_\_\_\_\_

Do you think the general public should be allowed to explore shipwrecks?

\_\_\_\_\_

\_\_\_\_\_

\_\_\_\_\_

What value do shipwreck sites have to contemporary society?

\_\_\_\_\_

\_\_\_\_\_

\_\_\_\_\_

4

## Windjammers

This exhibition is an interactive cinema experience taking visitors back to the age of sail.

Discuss the significance of a sailor's chest. What role would this chest play in a sailor's life at sea? What would you include in your own chest if you were about to leave for several months at sea? \_\_\_\_\_

---

---

---

---

6

## First Voyages

This exhibition looks at the early European voyages of the Australian coast.

Find the map "Cook's Tracks" and write the name that was given to Australia in 1782. \_\_\_\_\_

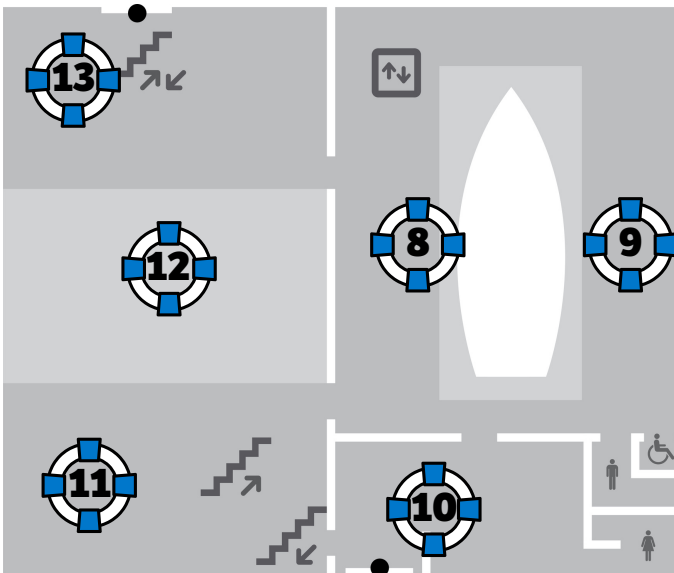
Compare Matthew Flinders and Nicholas Baudin's ships. Which one do you think would have been the most efficient in moving through the water? Why?

---

---

---

---



- Ground Floor**
- 8. Active II Ketch
  - 9. Figureheads
  - 10. Entrance, Shop & Toilets
  - 11. Action Stations: Navy
  - 12. Temporary Exhibition
  - 13. Dolphins: The Port River Pod

# 9

## The Figureheads

Figureheads are carved or painted figures or emblems that were thought to guide the ship safely through waters.

Find the oldest figurehead on display.  
Sketch a picture of it below and write three facts about it.

---

---

---

---

---

---

---

---

---

---

---

11

# Action Stations: Navy

This exhibition looks at the history of the Navy in South Australia.

Find the Protector Bell.

Which year is inscribed on the bell? \_\_\_\_\_

Read the information about the Protector. Write two facts about the vessel.

---

---

---

---

---

Respond to this impression of a young sailor onboard the HMCS Protector.

*"Crowds thronged the wharves and all the small boats in the river were packed to get a last glimpse of us and it reminded me of the parting words of Lord Tennyson...remember the eyes of the world are upon you. I guess the eyes of Port Adelaide were upon us".*

---

---

---

---

---

---

---

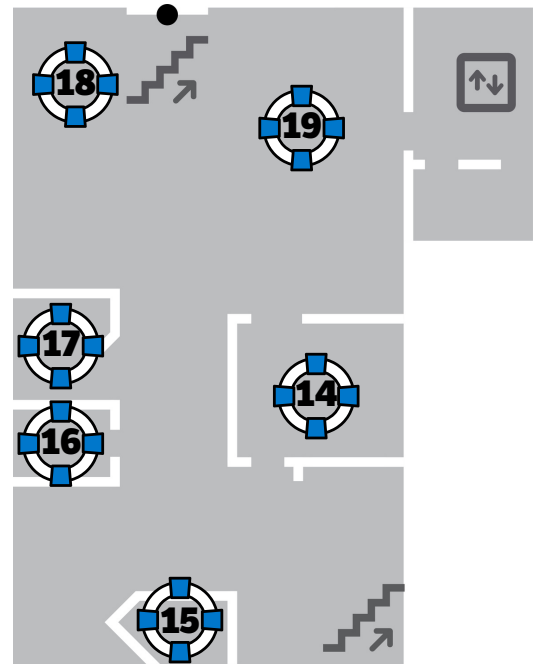
---

---

---

## Basement

- 14. Bound for South Australia - 1840s cabin
- 15. Bound for South Australia - 1910s cabin
- 16. Bound for South Australia - 1950s cabin
- 17. Passengers in History database
- 18. Torrens Island Quarantine Station
- 19. Living in Port



14-16

## Bound for South Australia

This exhibition tells us what it was like to migrate to South Australia by ship at different times in history.



What does this poster tell you about migration policies in the 1840s?

---



---



---



---



---

Why would this poster be of interest to people living in England in the 1840s?

---



---



---



---



---

19

# Living in Port

This exhibition looks at the history of Port Adelaide and the communities that have developed around it.

Port Adelaide was once known as Port Misery. What factors do you think contributed to this unfortunate nickname?

---

---

---

---

What were the main factors influencing the quality of working life for Port Adelaide's dockside workers?

---

---

---

---

---

Look to find an object that you think is the most important in the exhibition. Give a reason for your choice.

---

---

---

---

# Notes

Use this page to write down any notes or questions that you have.



Government  
of South Australia

